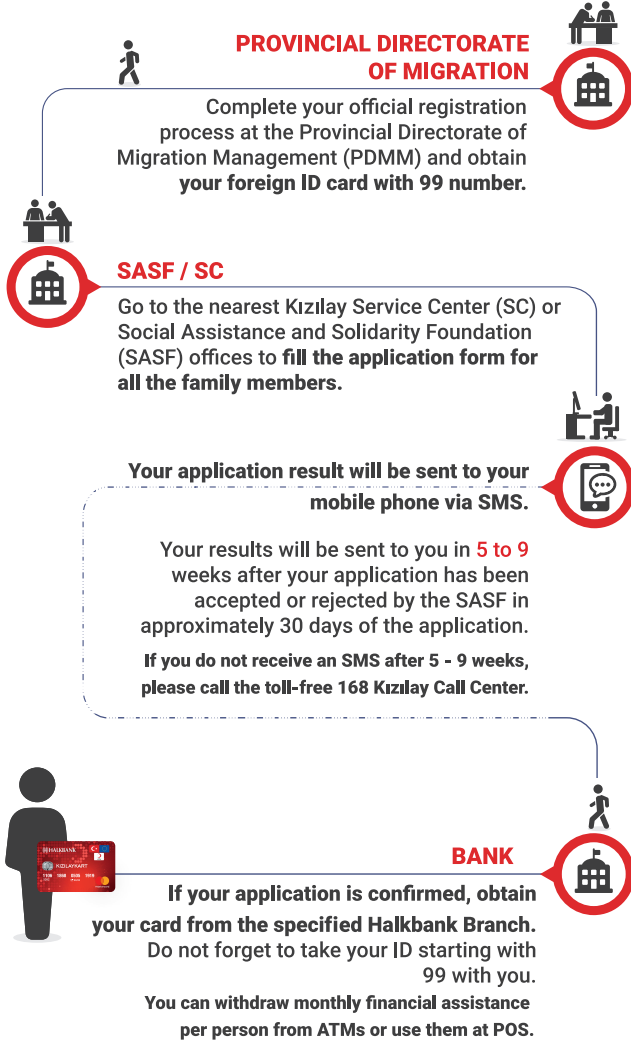


Application Process

Please follow these steps in order to apply for the ESSN Programme:



A household visit by SASF staff will be undertaken to all families receiving assistance to check the information provided on your application form and assess your continued need for assistance.

After completing the address change at the Provincial Migration Management/Population Office, notify the SYDV/If available Türk Kızılay Service Center in your district. **Please also submit any change in phone number at the SASF/Kızılay Service Center so that we can send you SMSes about your eligibility status and important updates regarding the programme.**

You can reach up to date information regarding the ESSN on the communication channels listed below:

You can call the toll-free 168 Kızılay Call Center with any questions and/or feedback regarding the ESSN Programme.



Monday to Friday
08:00 - 18:00



Saturday
09:00 - 13:00

Turkish · Arabic · Farsi · English · Pashto

Follow Us



www.facebook.com/Kizilaykart.Programlari

www.kizilaykart.org | Youtube: KIZILAYKART

All assistances / services provided by the programme are free of charge.

If any fee is requested for services, please call the 168 Call Center. **Being treated with respect is a right in every program implementation points. It is your right to submit any feedback or complaint regarding the program.**



Funded by
European Union
Humanitarian Aid



KIZILAYKART
PROGRAMMES

**EMERGENCY SOCIAL SAFETY
NET (ESSN) PROGRAMME
FOR FOREIGNERS**

If you hold a Temporary Protection / International Protection / International Protection Applicant Status or Humanitarian Residence permit in Türkiye, you can apply to the ESSN cash assistance programme.



What is ESN Programme?

It is a humanitarian cash assistance programme aiming to support the basic needs of the most vulnerable people living in Türkiye under Temporary Protection, International Protection, International Protection Application Status or Humanitarian Residency and an ID card starting with 99.

ESN financed by the European Union Civil Protection and Humanitarian Aid (ECHO) and its member states is jointly implemented by the Türk Kızılay, International Federation of Red Cross and Red Crescent Societies (IFRC) and the Republic of Türkiye Ministry of Family and Social Services (MoFSS).

Following an assessment against the eligibility criteria, individuals will receive 230 TL monthly cash assistance through KIZILAYKART. Aside from the monthly assistance payments, top-ups are also made periodically.

What is KIZILAYKART?

The KIZILAYKART is a bank debit card that will be provided by Türk Kızılay and distributed through Halkbank branches and Kızılay Service Centers and can be used at all Point of Sales (POS) and ATM machines across Turkey, except in stores selling tobacco and alcohol.



You can withdraw your per person cash assistance from ATM machines of Halkbank, Ziraat Bank and Vakıfbank in Türkiye, or use the money via POS machines (ATMs of banks aside from Halkbank, Ziraatbank and Vakıfbank may charge you for ATM usage). You can withdraw money from ATMs which are above 5 TRY. Any amount below 5 TRY can only be used in shopping.

Who can benefit?

According to the law number 3294, people who have no social security and are under any of the temporary protection, international protection, international protection applicant and humanitarian residence status, based on the needs assessment done by the board of trustees are deemed to be beneficiaries.

If you have been accepted into the programme, there will be a monthly automatic check to assess your continued eligibility. If your assistance is reduced or stopped, you will be informed accordingly. You will need to update your application in case there are any changes in your family composition.

AS OF JULY 2022;

THE HOUSEHOLDS WHO MEET THE BELOW REQUIREMENTS CAN BENEFIT FROM THE PROGRAMME.



1. IF THERE IS A MALE INDIVIDUAL AGED BETWEEN 18 - 59 IN YOUR HOUSEHOLD;

The dependency ratio must be 1,5 or above for each adult male in the household between the ages of 18 - 59 who is responsible for taking care of *dependent individuals.

$$\frac{\text{Number of Children Between the Ages of 0 - 17} + \text{Number of Male / Female 60 Years Old and Above}}{\text{Number of Male Individual Between the Ages of 18 - 59}} \geq 1.5$$

* The dependent individuals: Children between the ages of 0 - 17 and adults 60 years old and above.



2. IF THERE IS NO ADULT MALE INDIVIDUAL BETWEEN THE AGES OF 18 - 59 IN THE HOUSEHOLD;

The number of adult females between the ages of 18 - 59 should not exceed 2, and the total number of household members should not exceed 6.

www.kizilaykart.org • www.facebook.com/Kizilaykart.Programlari

For more detailed information, please visit our official website and Facebook page.